



ISO 9001



ISO 14001



OHSAS 18001

LEADING THE RECYCLING ECONOMY,  
INNOVATIVE ENERGY-SAVING EMISSION REDUCTION!



Oldlang Smart Electrical

Catalogue  
22/23

**65**  
Series

# High Quality Modular Distribution System

IEC/EN 60947-1 IEC/EN 60898-1  
IEC/EN 61008-1 BS/EN 50557



- ARD: Automatic Reclosing Device
- MCB: Miniature Circuit Breaker
- RCCB: Residual Current Operated Circuit-Breakers



Gold Supplier Trade Assurance

[Http://Smartelectrical.en.alibaba.com](http://Smartelectrical.en.alibaba.com)

Alibaba.com Verified TrustPass



www.Oldlang.cn Oldlang\_sale@163.com



# 65 Series High Quality Modular Distribution System

Gold Supplier Trade Assurance  
[Http://smartelectrical.en.alibaba.com](http://smartelectrical.en.alibaba.com)  
 Alibaba.com Verified TrustPass



Innovative Energy-Saving Emission Reduction  
Leading The Recycling Economy

www.Oldlang.cn  
Oldlang\_sale@163.com

## About Oldlang Smart Electrical

Oldlang Smart Technology Co.,Ltd. is a modern technology enterprise, committed to innovating energy conservation and emission reduction and leading the circular economy. The products focus on the original, low carbon, energy saving, collecting data, remote control and other functions are the characteristics of Oldlang's Smart electrical products. To enable users to use energy safely, reliably and efficiently is the value idea of Oldlang Smart Electrical. Therefore, the intelligent energy management is not only the inevitable development of the times, but also the direction of the development of the intelligent electrical of Oldlang's. Oldlang Smart Electrical provide wisdom into the city, the intelligent household practical products, improve people's life, improve the earth's environment, insist on sustainable development has always been the belief of Oldlang Smart Electrical.

In Oldlang smart electrical, we are always advocating:

INNOVATIVE ENERGY-SAVING EMISSION REDUCTION LEADING THE RECYCLING ECONOMY!





65 series of high-quality modular power distribution system, to provide you with a safe, flexible, simple new experience.

**Safety:** Even in harsh environment, still can ensure the absolute safety of personnel and equipment.

Visual security identifiers ensure security during maintenance.

Oldlang Smart Electric, based on more than 20 years of electrical expertise focused on customer needs, has introduced 65 series of high-quality modular power distribution systems.

The 65 Series provides the fastest and most flexible installation experience, completely eliminating safety concerns during maintenance and operation.

Adaptable to the most challenging networks and environments while maintaining cost-effectiveness over time, Series 65 is the most secure, flexible, simple and innovative low-voltage modular distribution system available.

The Series 65 high-quality modular distribution system provides you, your customers, and their equipment with the highest level of protection available today.

Its numerous international certifications and protection innovations mean that the 65 Series high quality modular power distribution system exceeds even the most demanding requirements, ensuring 100% absolute security for your terminal power distribution system.

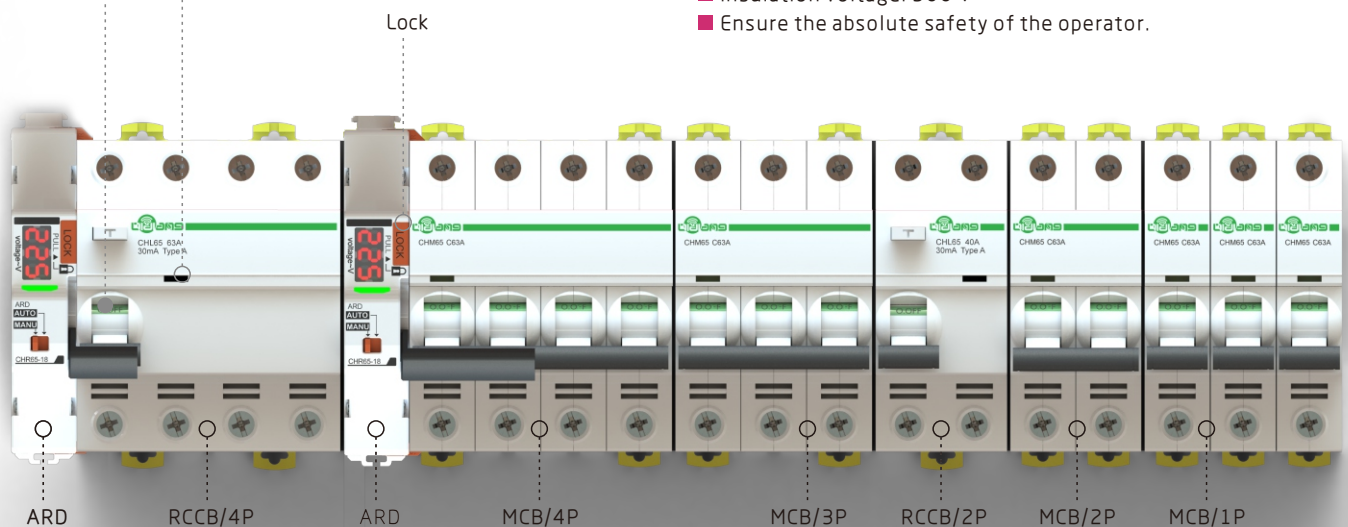
### Visual security identifier

In any environment and conditions, visual safety identification can ensure the absolute reliable safety of the subordinate circuit.

- Visual safety identification green indicator bar, reliable indication of contact disconnection position.
- Impact tolerance voltage:  $U_{imp} = 6 \text{ kV}$
- Ensure that even in the case of overpressure, still effectively improve the service life of the equipment.
- The highest level of pollution resistance in modular products: Level 3.
- Promises a truly harsh environment product, even with dust and guidesThe environment is polluted by electricity.
- Insulation voltage: 500 V
- Ensure the absolute safety of the operator.

### Visual security identifier

Visual safety identification green indicator bar, reliable indication of contact disconnection position.



ARD: Automatic Reclosing Device

MCB: Miniature Circuit Breaker

RCCB: Residual Current Operated Circuit-Breakers



The 65 series lets you not worry about the safety of electrical equipment, buildings, and internal personnel.

### Promise absolute protection against electric shock

Electric shock protection grade: Class 2

The electrical clearance between the surface and internal parts of Series 65 circuit breakers exceeds two times the standard requirements. Regardless of environment or operator experience, the 65 Series circuit breakers guarantee risk-free maintenance and use throughout the entire service life of the equipment.

### Reliable fastening

65 series circuit breaker terminals can bear twice the national standard torque tightening torque, making the cable connection more reliable and firm.

### Secure and reliable connection

The terminal protection level of 65 series circuit breakers reaches IP20B, making the connection more reliable and secure.

### Open to any PLC and BMS system

65 series control products use standard Ti24 interface, can be flexibly connected with a variety of PLC and BMS (building management system), to adapt to different application requirements. Can maximize the optimization of lighting and building control design.

### Protect the load and effectively extend the service life

Full series quick closure

The quick closure feature of the Series 65 circuit breakers helps prevent overheating and aging by limiting the release of energy when the contacts are closed.

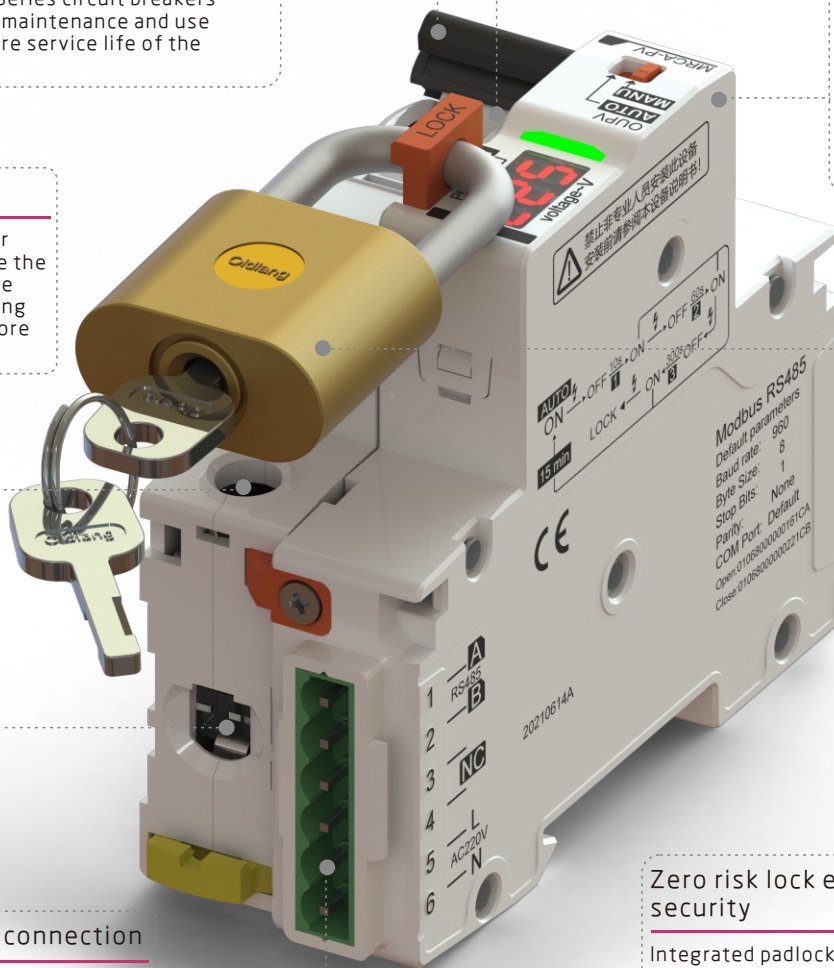
### Automatic control in unattended situations

65 series products launched a new automatic coincidence remote control accessories, a variety of programs to choose from, can effectively reduce the cost of unattended occasions.

### Zero risk lock ensures absolute security

Integrated padlock mechanism

The remote control unit of Series 65 uses a rugged integrated padlock that allows full locking for safety. It prevents inadvertent or unauthorized remote control of power supply equipment, thus ensuring the absolute safety of the operator.



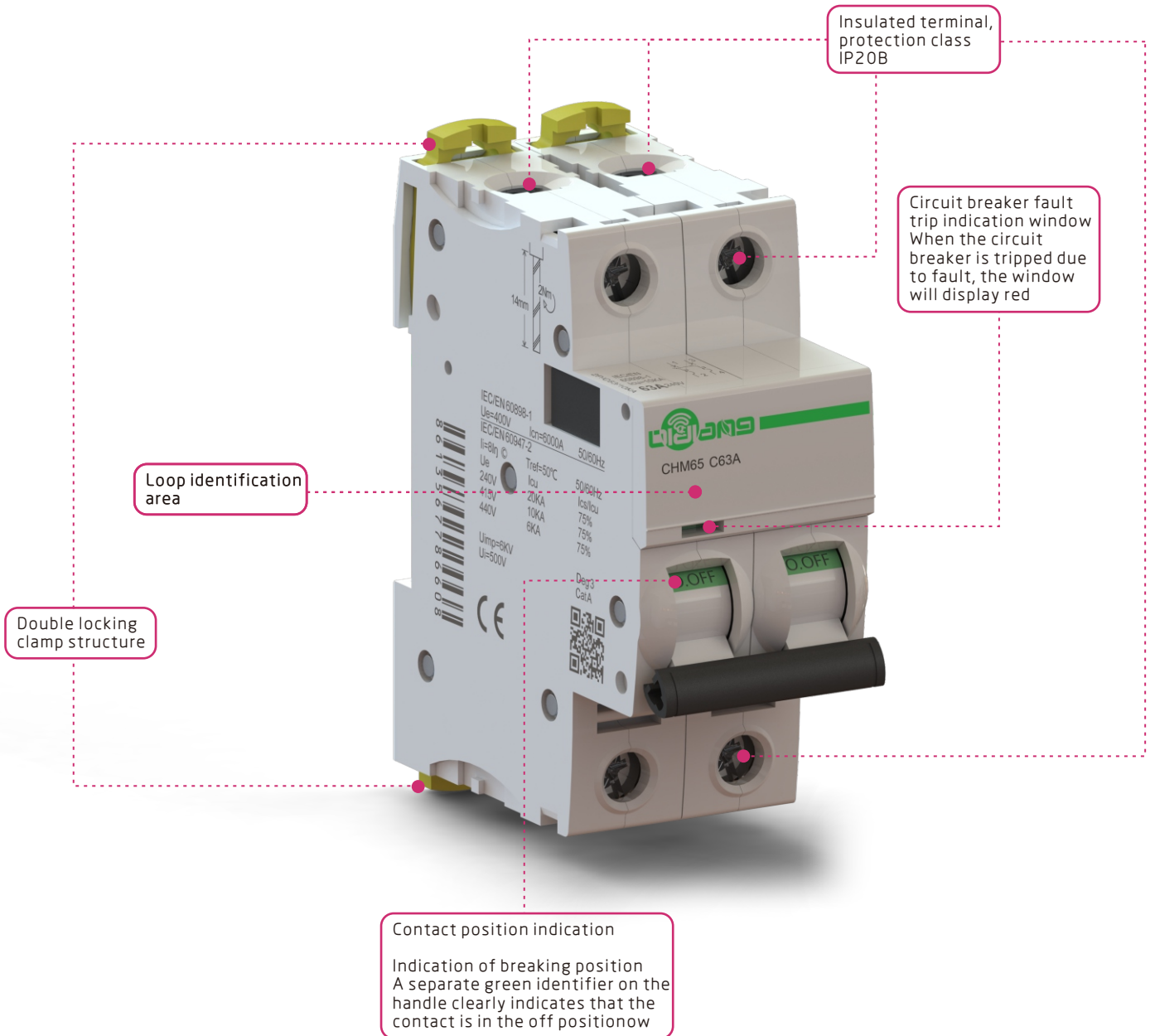


### CHM65-63 Miniature Circuit Breaker (MCB)

Standard		IEC/EN 60898-1 IEC/EN 60947-1
Certification		CE UKCA
Pol.		1P, 1P+N, 2P, 3P, 3P+N, 4P
Rated current	$I_n$	1, 2, 4, 6, 10, 16, 20, 25, 32, 40, 50, 63A
Rated voltage	$U_e$	230/400V AC
Rated insulation voltage	$U_i$	500V
Maximum operating voltage	$U_{max}$	440V
Minimum operating voltage	$U_{min}$	12V
Rated operating frequency		50/60Hz
Rated impulse tolerance voltage	$U_{imp}$	6KV
Rated short-circuit capacity	$I_{cn}$	6KA (230/400V AC, IEC/EN 60898)
Rated limit short-circuit breaking capacity	$I_{cu}$	10KA (230/400V AC, IEC/EN 60947-2)
Rated short-circuit breaking capacity	$I_{cs}$	100% $I_{cu}$ (1~4A); 50% $I_{cu}$ (6~63A). (230/400V, IEC/EN 60947-2)
Overvoltage class		IV
Pollution level		3
Instantaneous trip characteristic		B(3 $I_n$ ~5 $I_n$ ), C(5 $I_n$ ~10 $I_n$ ), D(10 $I_n$ ~14 $I_n$ )
Leakage protection accessories		Yes
Electrical accessories and mechanical accessories		Yes
Shock protection class		II
Mechanical life		20000
Electrical life		10000
Protection class		Circuit breaker body: IP20; Installed in the distribution box: IP40
Reference setting temperature		30°C
Terminal form		Tunnel type
Maximum wiring capacity		≤25A: 25mm <sup>2</sup> ; >25A: 35mm <sup>2</sup>
Terminal limit torque		≤25A: 5.1Nm; >25A: 5.6Nm
Contact status indication		Yes
Fault indicating window		Yes
Incoming mode		Both up and down the line are fine



**CHM65-63**



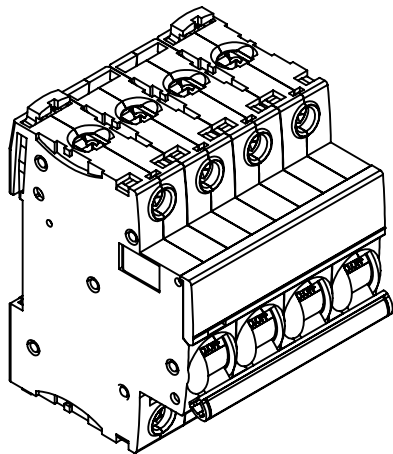
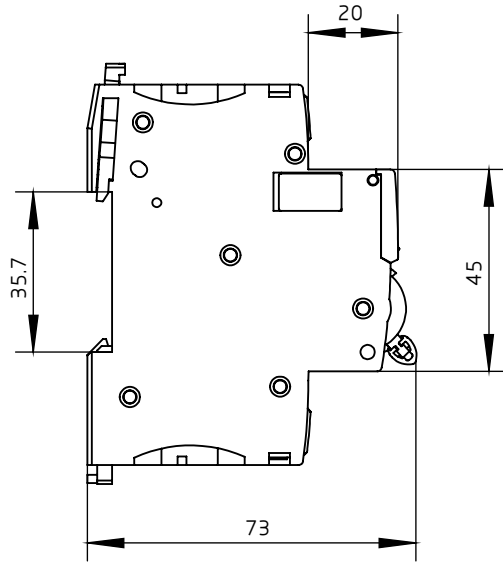
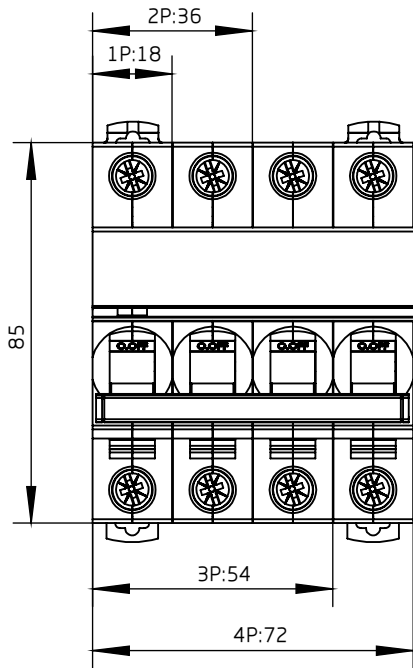
65 series circuit breakers are destined to attract much attention from the beginning of design. We use simple lines and distinctive design concepts, giving the series 65 circuit breakers the perfect appearance. It will let you immediately appreciate the careful design and detail, as well as the user friendliness. Clear signage and first class appearance will impress your customers with the 65 Series circuit breakers.

Even if you just hold the 65 series circuit breaker, you will still experience its distinctive quality. The internal machinery operates quickly and accurately, without any suspicious noise. 65 series circuit breakers smooth surface and delicate components let you have a different feeling.



**CHM65-63**

Product outline and installation dimension drawing (mm)



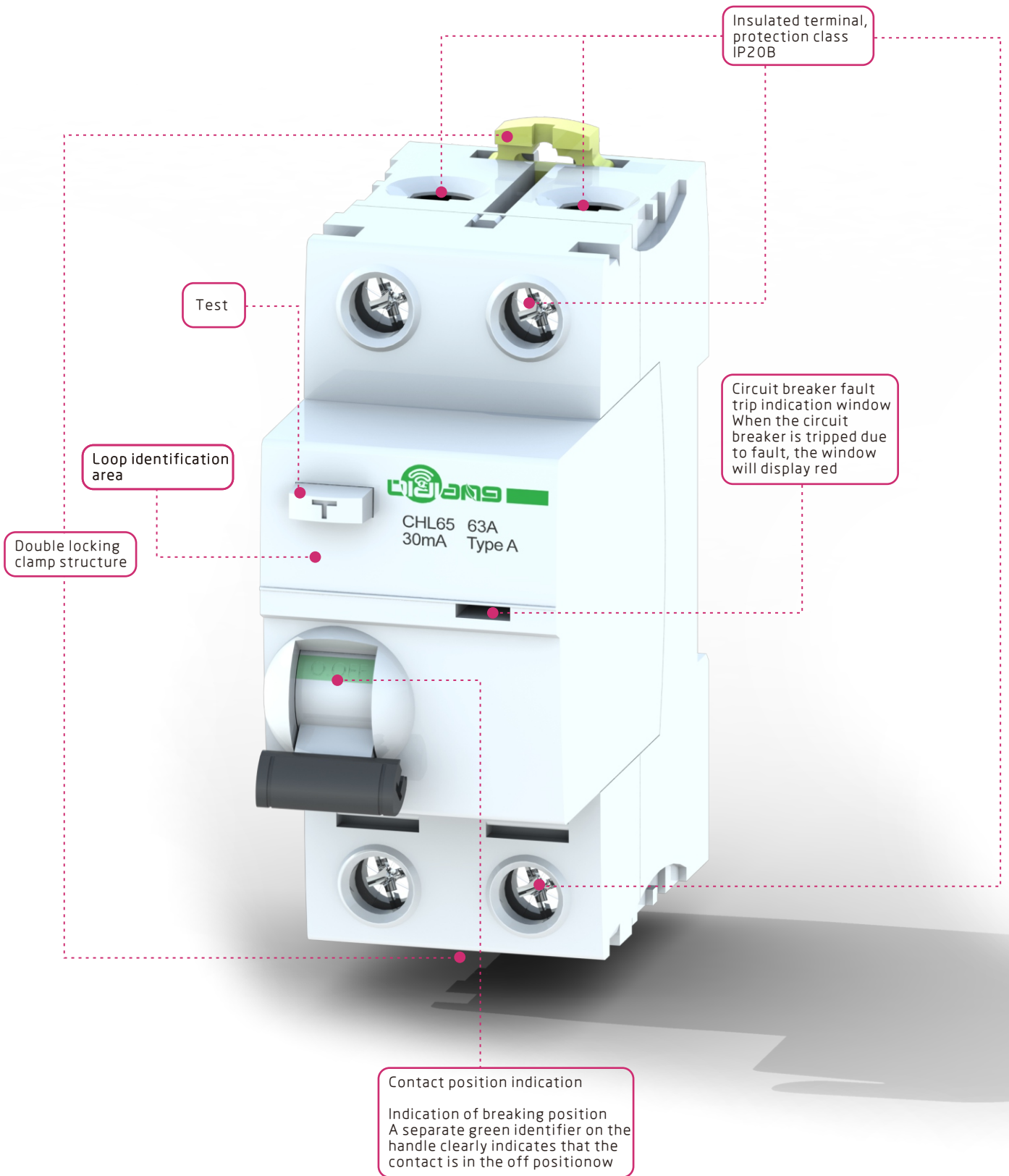


### CHL65-63 Residual Current Operated Circuit-Breakers (RCCB)

Standard		IEC/EN 61008-1 IEC/EN 60947-1
Certification		CE UKCA
Pol.		2P, 4P
Rated current	$I_n$	16, 25, 40, 50, 63A
Rated voltage	$U_e$	230/400V AC
Rated insulation voltage	$U_i$	500V
Maximum operating voltage	$U_{max}$	440V
Minimum operating voltage	$U_{min}$	12V
Rated operating frequency		50/60Hz
Rated impulse tolerance voltage	$U_{imp}$	6KV
Rated short-circuit capacity	$I_{cn}$	6KA (230/400V AC, IEC/EN 60898)
Rated limit short-circuit breaking capacity	$I_{cu}$	10KA (230/400V AC, IEC/EN 60947-2)
Rated short-circuit breaking capacity	$I_{cs}$	100% $I_{cu}$ (1~4A); 50% $I_{cu}$ (6~63A). (230/400V, IEC/EN 60947-2)
Overvoltage class		IV
Pollution level		3
Residual operating current	$I_{\Delta n}$	10mA, 30mA, 100mA, 300mA, 500mA
Residual No-operating current	$I_{\Delta no}$	0.5 $I_{\Delta n}$
Type		AC, A, B, S
Shock protection class		II
Mechanical life		20000
Electrical life		10000
Protection class		Circuit breaker body: IP20; Installed in the distribution box: IP40
Reference setting temperature		30°C
Terminal form		Tunnel type
Maximum wiring capacity		$\leq 25A$ : 25mm <sup>2</sup> ; $> 25A$ : 35mm <sup>2</sup>
Terminal limit torque		$\leq 25A$ : 5.1Nm; $> 25A$ : 5.6Nm
Contact status indication		Yes
Fault indicating window		Yes
Incoming mode		Both up and down the line are fine



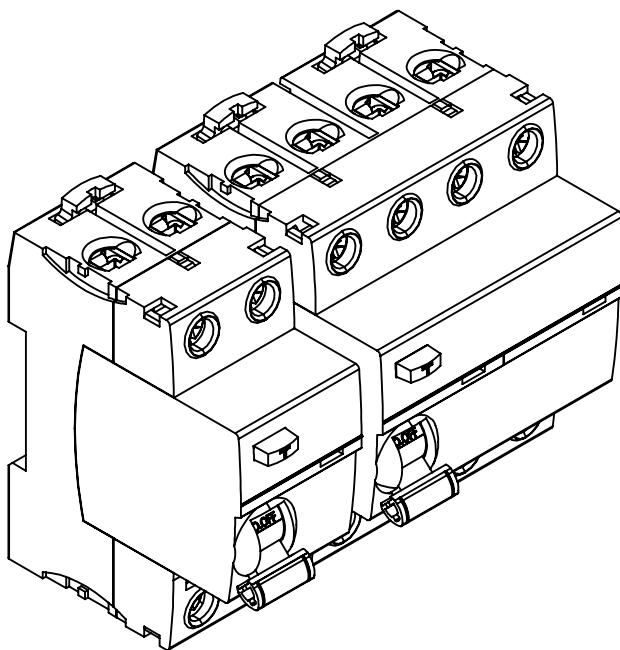
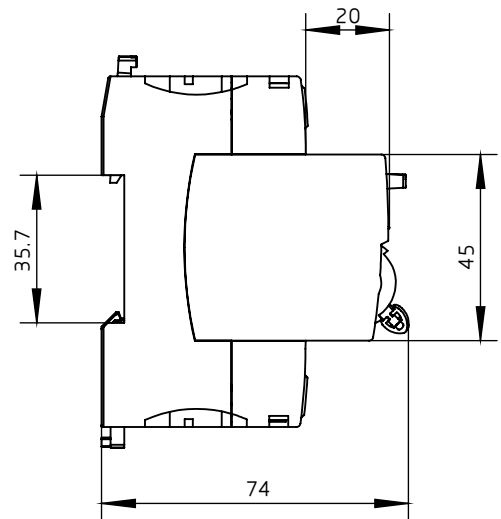
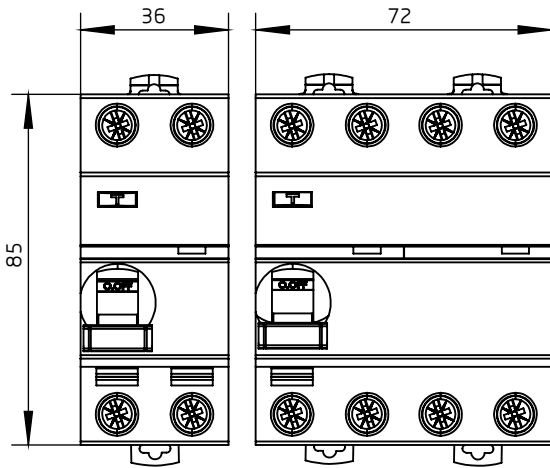
**CHL65-63**

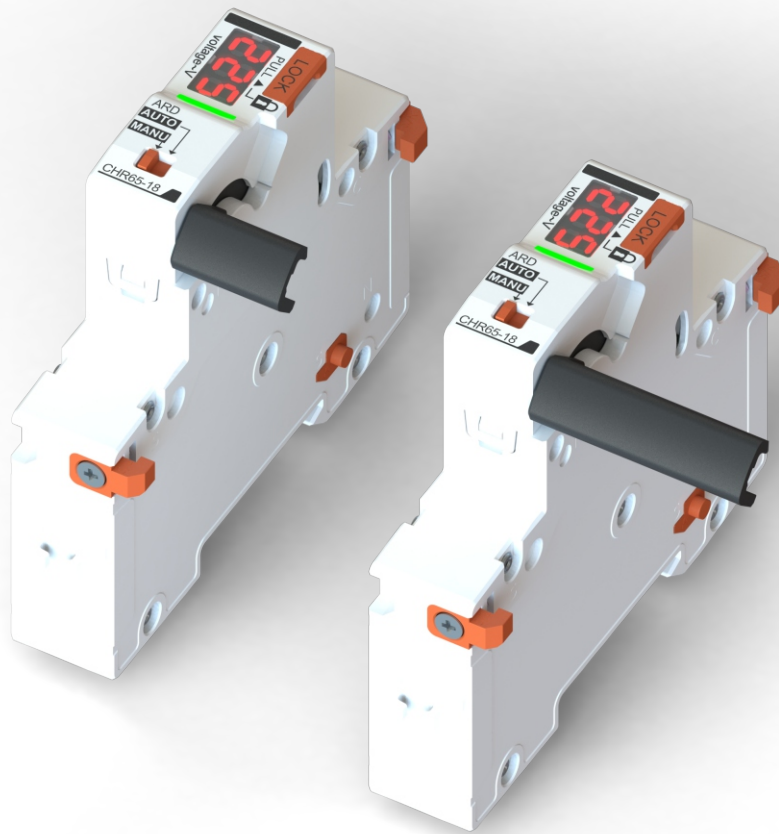




**CHL65-63**

Product outline and installation dimension drawing (mm)



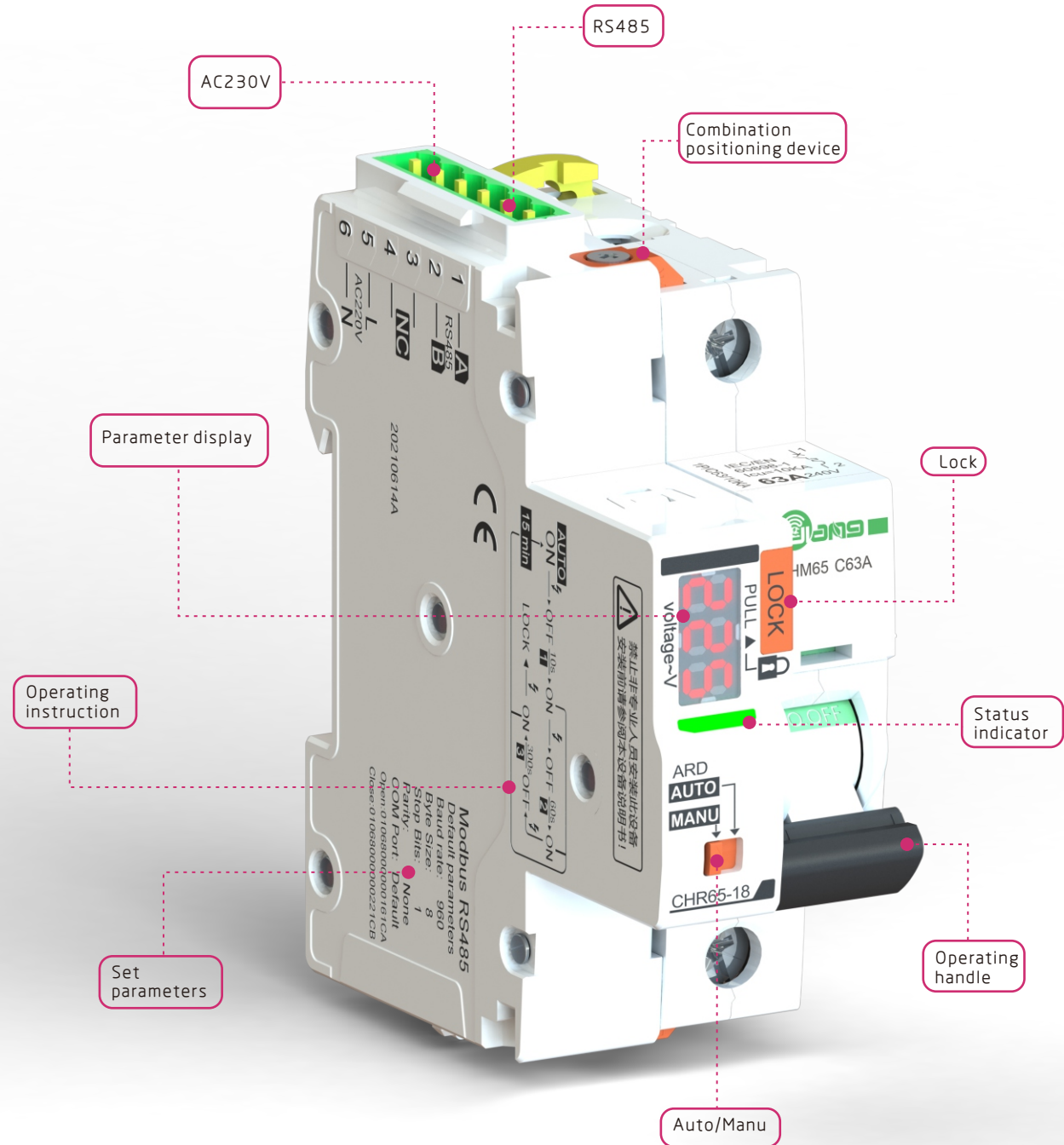


**CHR65-18 Automatic Reclosing Device (ARD)**

Standard	BS EN 50557 IEC/EN 60947-1
Certification	CE UKCA
Pol.	18mm
Fitted circuit breaker	65 series: MCB-CHM65-63、RCCB-CHL65-63
Rated voltage	Un 230V AC (70%~125%); 24~48V DC
Control signal	ModBus-RS485, Wet node 230V high level/pulse signal (Optional)
Over and under voltage protection function	AC160~275V±5V (Optional)
Timing function	Yes (Optional)
Rated operating frequency	50/60Hz
Information display	Display 3 digits: voltage, number of on-off and off, failure status
Effectively control signal duration	>400ms
Closing operation time	< 1s
Opening operation time	< 0.5s
Control loop cable length	≤1500m
Current carrying capacity of auxiliary contact (terminal 8-9-10)	1CO, minimum working current 3mA (24VDC) (Resistive) (Optional)
Current carrying capacity of signal contacts (terminals 5-6-7)	Max working current 2A (30V DC), 0.5A (125V AC) (optional)
Power consumption	≤ 1.5VA (static); ≤25VA (dynamic)
Rated insulation voltage (S2C-RM between DC and MCB)	400V AC 4kV (4.9kV at sea level)
Mechanical life	10000
Electrical life	10000, 3 times per minute
Self-locking protection	3CO / 4CO / 6CO within 10s / 20s / 30s, the product will self-lock and protect, and automatically recover after 40s
Indicator light	Green: normal state; Red: fault
Automatic/Manual switch	Auto remote control on and off available; Manual remote control switching disabled
Protection class	IP20
Danger level according to EN 45545-2	R26 /HL3
Shock and vibration resistance according to IEC 61373	Category 1 - Grade A/B
Humidity and heat resistance IEC/EN 60068-2-30	28 cycles (55 °C / 90-96%, 25 °C/95-100 %)
Ambient temperature	-25°C~+70°C
Storage temperature	-40°C~+70°C



CHR65-18



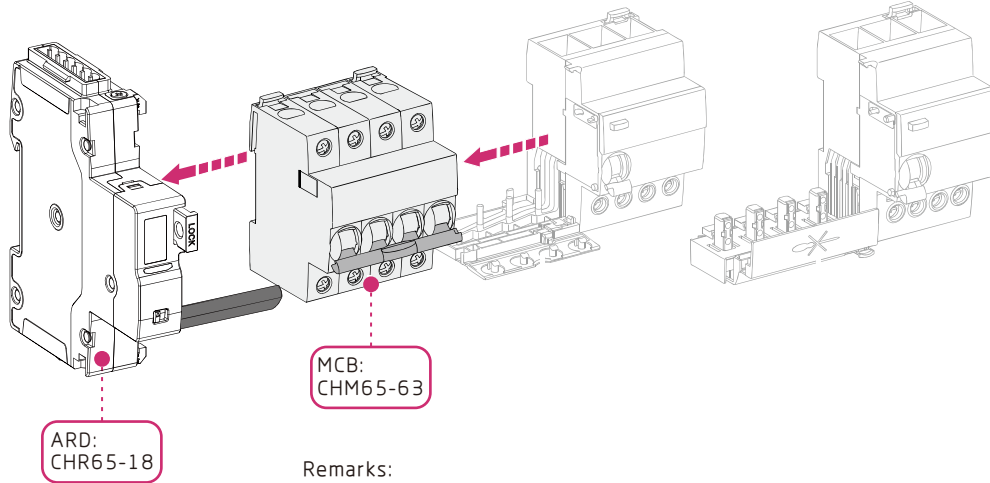
**Self-recovery photovoltaic special reclosing actuator:**

With 65 series of high quality circuit breaker, without affecting the circuit breaker body, the circuit breaker with intelligent upgrade, can be remotely automatic closing and opening control through MODBUS RS485, while protecting the overload and short circuit of the line. At the same time, it has the function of parametrization can be configured through the MCU automatic judgment, to reach the power failure, automatic call closing function, is widely used in the photovoltaic grid-connected AC distribution box, as well as the personnel is difficult to approach the occasion, the maintenance personnel can not be in place in time the occasion of unattended occasion, the occasion of high demand for power supply continuity.



**CHR65-18 Installation instructions**

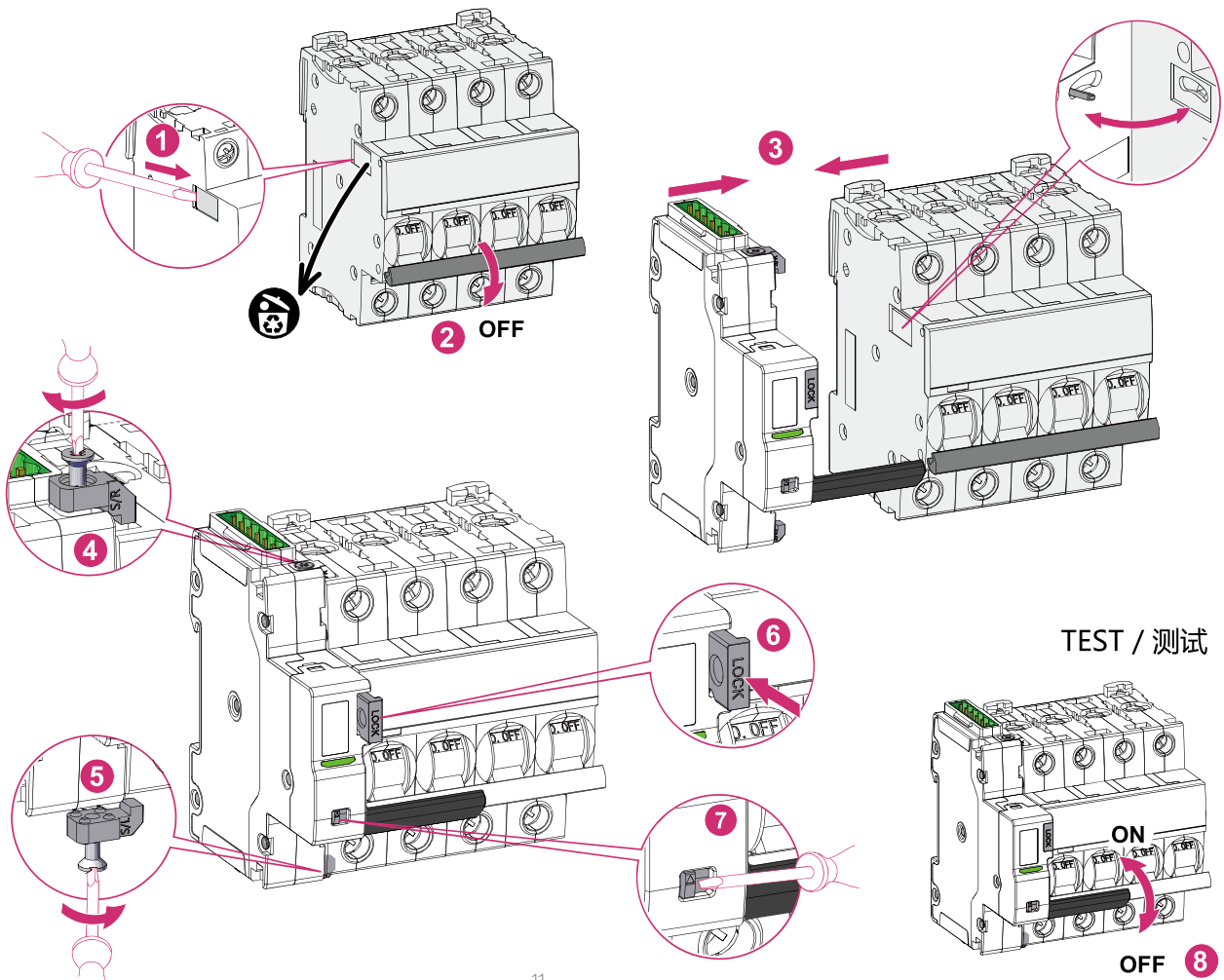
**1**



Remarks:

1. CHR65-18- Confirm its handle length -1P/2P with sales when purchasing.
2. MCB- Series 65 is preferred in the adaptation, and other models can be customized.

**2**



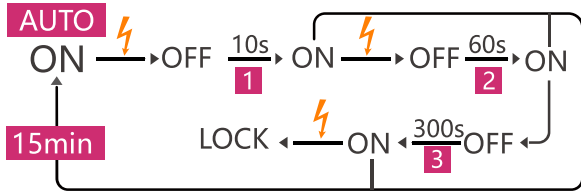
11



**CHR65-18**

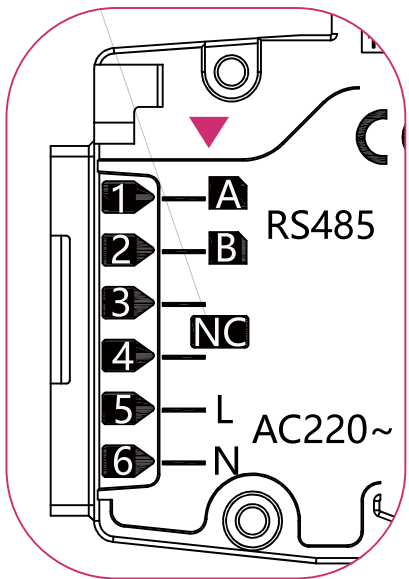


Running logic in AUTO mode

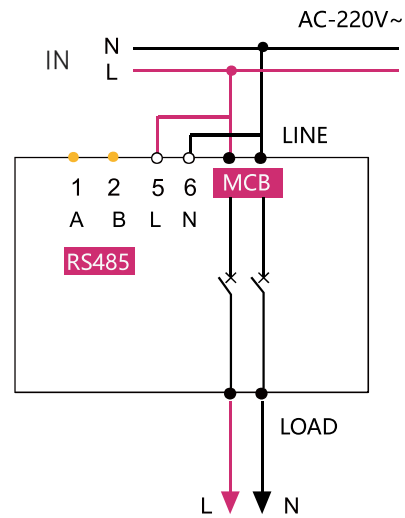


When the equipment needs maintenance, switch ARD to MANU.

1. Possible risk of electric shock, explosion or arc burn
2. Before maintaining the device, cut off all power supplies.
3. Failure to follow these instructions will result in injury or death.



Connection mode



Wiring terminals. Please connect the terminals in the order shown in the figure.

For example, the above single-phase/three-phase cable L can use any item ABC as the power cable

- Power and control signal terminal connection ability: 28-12AWG 2.5mm<sup>2</sup>
- Auxiliary signal terminal connection capability: 28-14AWG 1.5mm<sup>2</sup>
- Rail mounting: DIN Rail EN 60715 (35 mm)



**CHR65-18**

Product outline and installation dimension drawing (mm)

